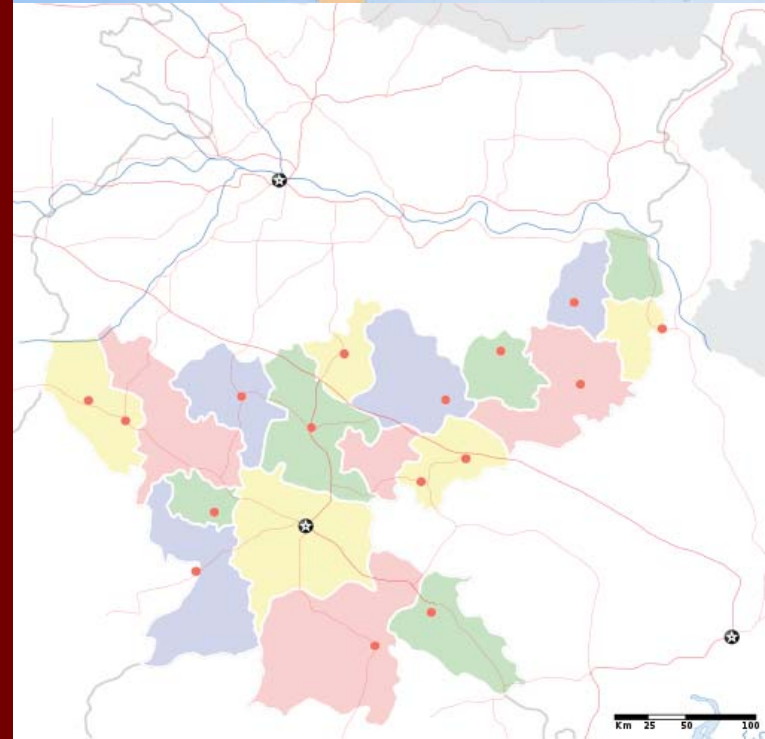
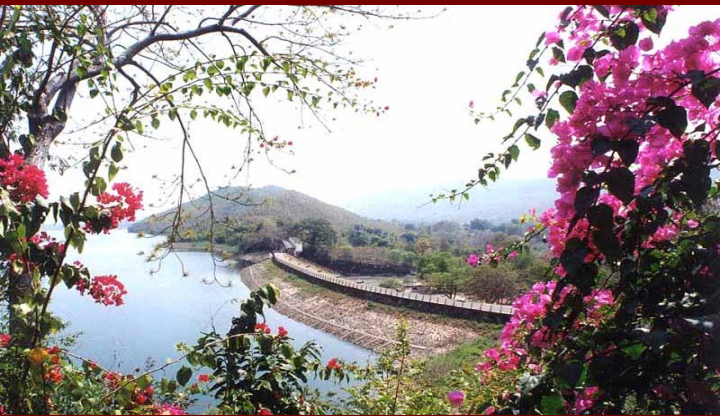




Jharkhand India

- The state was carved out of the southern part of Bihar state on 15 November 2000
- Jharkhand was considered a “backward” part of the state of Bihar before it became its own state
- Capital is Ranchi





- The name "Jharkhand" comes from the Sanskrit word *Jharikhanda*, the ancient name of the region's dense forest
- Has some of the greatest mineral wealth in all of India—as well as some of the largest forests (most of the state is still forested containing tigers and Asian elephants)

- Although extremely wealthy in minerals, the population is poor and infrastructure relatively underdeveloped:
 - 69% of villages un-electrified (2008 Ministry of Power)
 - 90% of rural households with no electricity
 - Per capita income in mid level (probably due to wealthy industrialists)
 - Large disparity in income
 - 80% of population are subsistence farmers

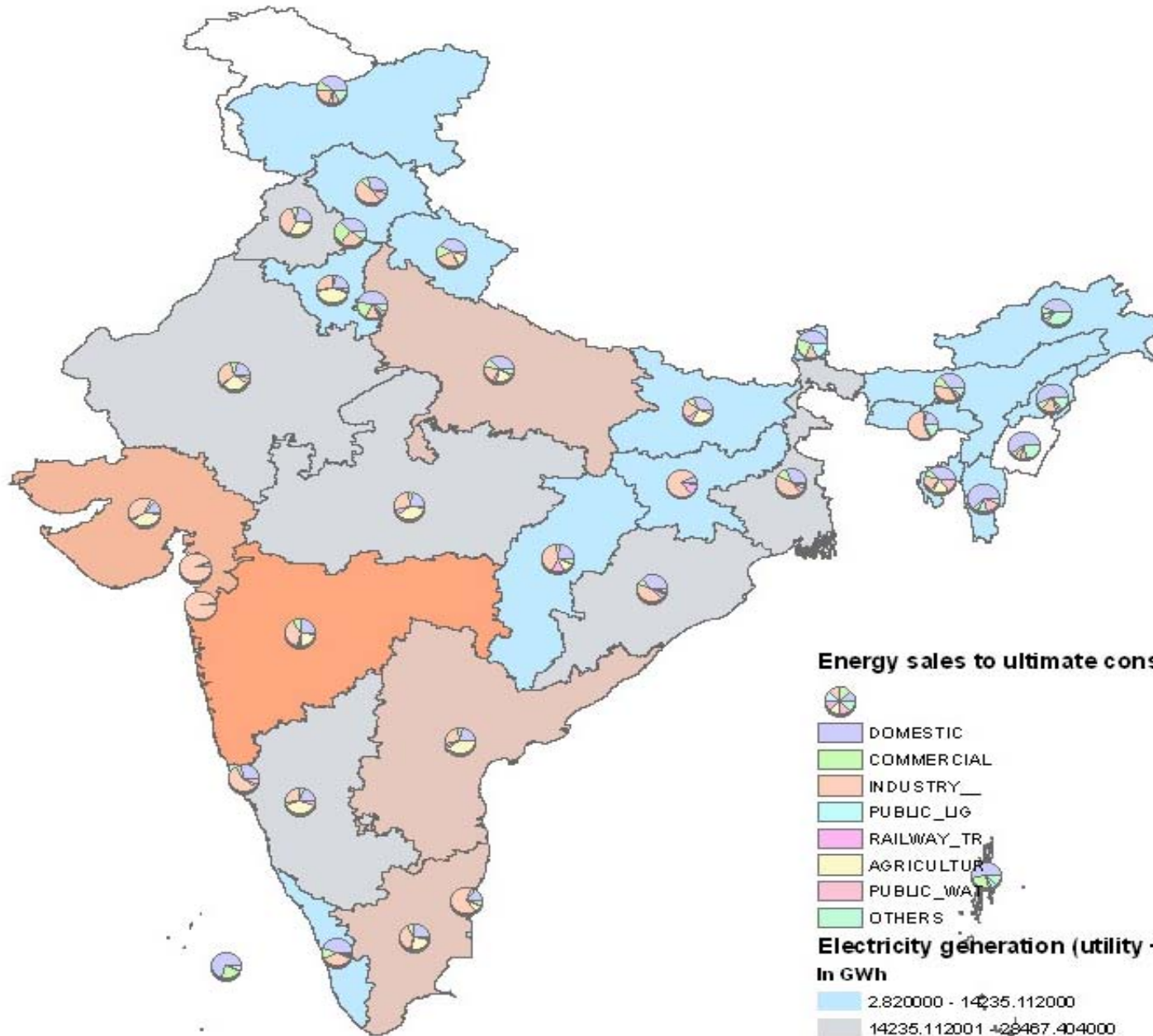




Main Industries

- Largest fertilizer factory of its time in India (since shut down)
- Largest Steel plant in Asia
- Biggest explosives factory
- First methane gas well
- Mineral resources include: iron ore, coal, copper ore, mica, bauxite, manganese, limestone, asbestos, thorium, uranium, gold, silver. The large concentrations of iron and coal support the major industries in the state.

State wise Sector wise Energy consumption

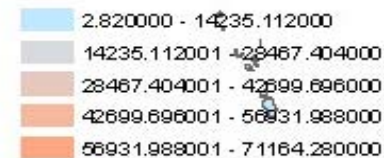


Energy sales to ultimate consumers utilities only (GWh), 03-04

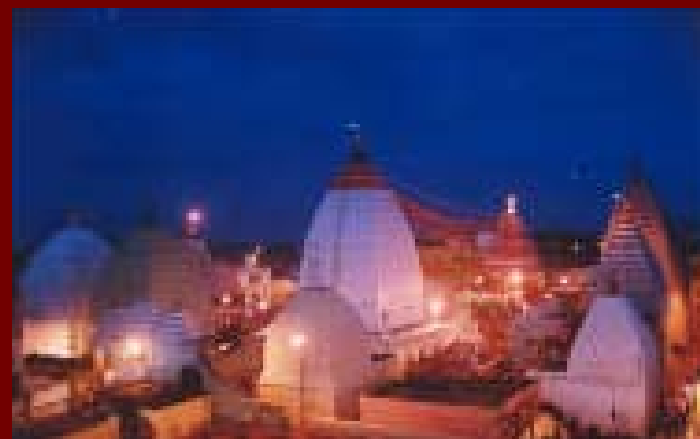


Electricity generation (utility + captive), 2003-04

In GWh



- Lower population density than other Indian states
- Large tribal community (32 different tribal groups—indigenous groups called the Adivasis)
- Although poor, the people of the state tend to be politically mobilized
- Have had issues with Naxalites (in Naxal “belt” of India)
- Literacy rate about 60% (Male: 70%; Female: 40%)
- Most people speak Hindi and are practicing Hindus



Groups Operating In Jharkhand

- Internal organizations working in Jharkhand in environment/energy:
 - Jharkhand Renewable Energy Development Agency (JREDA) is the State group out of IREDA
 - Krishi Gram Vikas Kendra
 - Samagra Vikas Mission
 - Gene Campaign
 - Gram Vikas Trust
 - PRADAN
 - Nav Bharat Jagiti Kendra
 - CEE
 - Tata Steel Rural Development Society (TSRDS)